



The Perfect Balance of Beauty and Strength



**PRODUCT
CATALOG**

Aluminum Baluster, Glass and
Cable Railing Systems

OVERVIEW

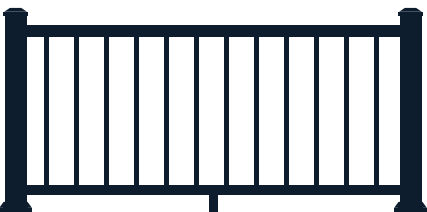
Harmony Railing™ manufactures premium powder-coated aluminum baluster and glass railing systems for decks, patios and swimming pools with low-maintenance living in mind. Our dedication to research and development ensures a uniquely engineered railing system that meets commercial and residential codes throughout North America.

Harmony’s high-performance railings are made of durable aluminum and coated with an AkzoNobel custom-blended Interpon D Series AAMA 2604 textured powder coating. Harmony Railing™ products are backed by a 20-year limited warranty against manufacturing defects, cracking, chipping, blistering or peeling under normal use and weather conditions.

Through our growing dealer network, Harmony Railing™ is positioned to offer cost-effective railing products throughout North America.



HARMONY RAILING™ SYSTEMS



Baluster Railing



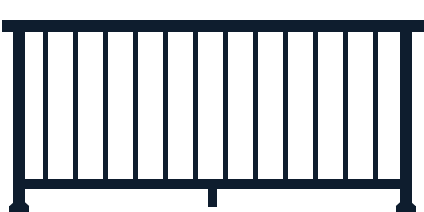
Vertical Cable Railing



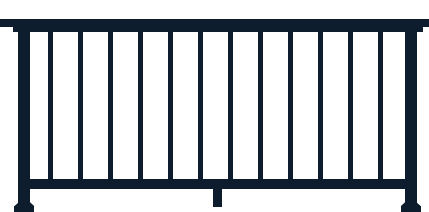
Horizontal Cable Railing



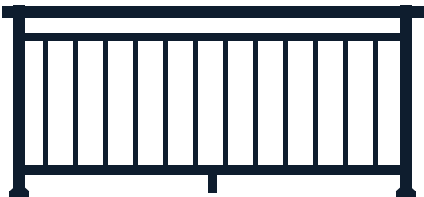
Glass Railing



Continuous Baluster Railing



Drink Rail



Baluster Open Mid-Rail

Custom ordered product. Not available in all areas.



PREMIUM DESIGN

Hidden fasteners, no welds or rivets, elegant top rails



FULL PRODUCT LINE

gate kits, lights, ADA handrails and parts



STRENGTH AND DURABILITY

Textured Powder-Coated Aluminum. Engineered, tested and approved as per ICC-ES AC273 and is IBC/IRC code compliant.



PREASSEMBLED PANELS

for fast and easy installation



CONVENIENT KITS

for simple planning and ordering

COLORS AND STYLES

TEXTURED COLOR OPTIONS



BLACK



WHITE



BRONZE



MAHOGANY



OAK

WOOD GRAIN TOP RAILS

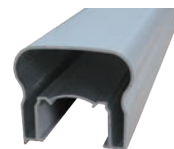
(VICTORIAN ONLY)

Colors vary by monitors and printing process. See actual samples for accurate color.

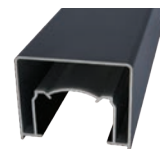
ALUMINUM RAILING SPECIFICATIONS

- 6' Panels – Actual Sizes: 33.5"H X 69.43" or 39"H X 69.43"
- 8' Panels – Actual Sizes: 33.5"H X 91.31" or 39"H X 91.31"
- Baluster Dimensions = 1/2" x 3/4" (.050" wall)
- Baluster Spacing = 3.875"
- Victorian Top Rail – 2.25"H x 2.25"W (.055" wall)
- Alta Top Rail – 1.833"H x 2.25"W (.055" wall)
- Bottom Rail – 1.5" x 1.5" (.055" wall)
- 3" x 3" Posts – Actual Lengths = 38.25", 43.5" and 48" (.065" wall)
- 2" x 2" Posts – Actual Lengths = 34.06", 39.625" and 48" (.09" wall)
- Gate Kits – Actual Sizes: 33.9"H X 48"W or 39.5"H X 48"W

TOP RAIL PROFILES

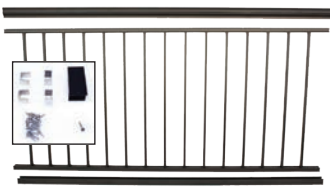
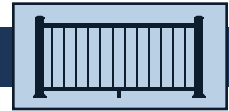


VICTORIAN



ALTA

BALUSTER PANEL SYSTEM



Preassembled Aluminum Panels

B=Black, W=White, Z=Bronze,
M=Mahogany, O=Oak

RAILING PANELS

Victorian

6' x 36" P/N HR362306
6' x 42" P/N HR362406
8' x 36" P/N HR362308
8' x 42" P/N HR362408

Alta

6' x 36" P/N HR862306
6' x 42" P/N HR862406
8' x 36" P/N HR862308
8' x 42" P/N HR862408



B=Black, W=White, Z=Bronze,
M=Mahogany, O=Oak

STAIR RAILING PANELS

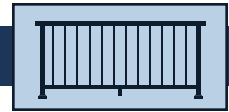
Victorian

6' x 36" P/N HS352306
6' x 42" P/N HS352406
8' x 36" P/N HS352308
8' x 42" P/N HS352408

Alta

6' x 36" P/N HS852306
6' x 42" P/N HS852406
8' x 36" P/N HS852308
8' x 42" P/N HS852408

CONTINUOUS RAILING SYSTEM



RAILING PANELS

6' x 36" P/N HR062306
6' x 42" P/N HR062406
8' x 36" P/N HR062308
8' x 42" P/N HR062408

B=Black, W=White, Z=Bronze

NOTE: Top rails sold separately with continuous railing system



STAIR RAILING PANELS

6' x 36" P/N HS052306
6' x 42" P/N HS052406
8' x 36" P/N HS052308
8' x 42" P/N HS052408

B=Black, W=White, Z=Bronze

NOTE: Top rails sold separately with continuous railing system



Note: 2" Posts are used with the Continuous Railing System.

DRINK RAIL SYSTEM



RAILING PANELS (SAME AS CONTINUOUS RAIL SYSTEM)

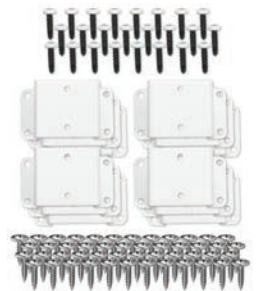
6' x 36" P/N HR062306
6' x 42" P/N HR062406
8' x 36" P/N HR062308
8' x 42" P/N HR062408

B=Black, W=White, Z=Bronze

NOTE: The Drink Rail System is not offered for stair panels.

Choose your own top rail – typically a deck board to match the deck surface.

Each 8' Section Requires: one Railing Panel, four Drink Rail Clips (1/3 of a kit) and one Bottom Rail Snap. For 6' sections, only three Drink Rail Clips are required.



DRINK RAIL KITS

Includes 12 color matched clips, 24 #8 3/4" Self-tapping SS screws, 48 #8 3/4" type 17 phillips SS mod truss K-Lath screws.

Black = P/N BR094203BK
White = P/N BR094203WK
Bronze = P/N BR094203ZK

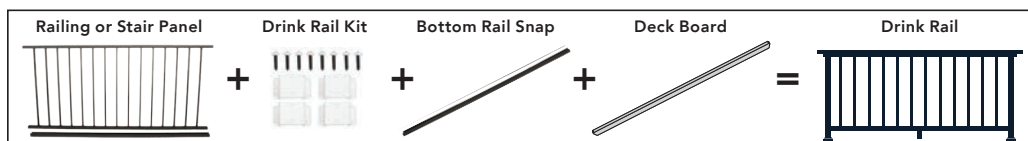
Bottom Rail Snaps

6' Snap P/N SH093106

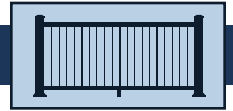
8' Snap P/N SH093108

B=Black, W=White, Z=Bronze

NOTE: For the Drink Rail System, the Bottom Rail Snap (SH093106 or SH093108) is used as the Top Rail Snap which supports the bracket and the Drink Rail. The panels to order are the continuous top rail panels (they do not include a top rail snap).



VERTICAL CABLE RAILING SYSTEM



RAILING PANELS

6' x 36" Victorian P/N VC362306
6' x 36" Alta P/N VC862306

STAIR RAILING PANELS

6' x 36" Victorian P/N VC352306
6' x 36" Alta P/N VC852306

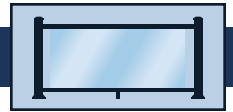
Actual panel size = 33.5"H X 69.43".
System uses standard 3" aluminum posts. Top Rail Snaps are included.

B=Black, W=White, Z=Bronze

Vertical
Cable
Railing
System
available
late 2021



1/4" TEMPERED GLASS RAILING SYSTEM



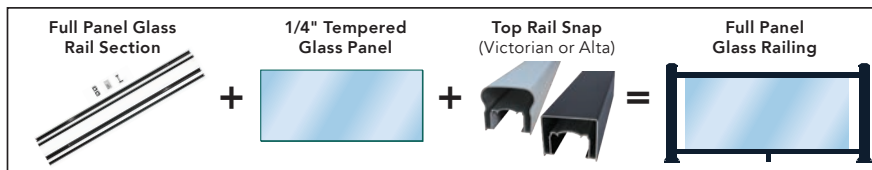
6' FULL PANEL GLASS RAIL SECTION

Actual panel length = 69.43". Glass and Top Rails are not included and must be purchased separately. P/N HG031206

B=Black, W=White, Z=Bronze



1/4" Tempered Glass Panels Must Be Purchased from a Local Glass Company.



ALUMINUM POSTS, BASE PLATE, CAP & SKIRT



3" ALUMINUM POST KITS

Includes: assembled post and base plate, post cap and post base plate vinyl skirt.

3" x 36" P/N HK441336
3" x 42" P/N HK441342
3" x 48" P/N HK441348

B=Black, W=White, Z=Bronze

Post-to-deck mount screws/anchors sold separately.

3" x 3" Posts – Actual Lengths = 38.25", 43.5" and 48".



2" ALUMINUM POST KITS

Includes: assembled post and base plate, post base plate vinyl skirt, straight cross-over bracket and two #8 x 1.5" self-tapping screws.

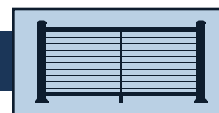
2" x 36" P/N HK341236
2" x 42" P/N HK341242
2" x 48" P/N HK341248

B=Black, W=White, Z=Bronze

Post-to-deck mount screws/anchors sold separately.

2" x 2" Posts – Actual Lengths = 34.06", 39.625" and 48".

HORIZONTAL CABLE RAILING SYSTEMS



6' panels actual size: 33.5"H X 69.43"; 8' panels actual size: 33.5"H X 91.31". System requires Horizontal Cable 3" aluminum posts. Top Rail Snaps are included. Full Frame Kits include a bottom rail and require 9 horizontal cables. Top Rail Kits do not include a bottom rail and require 10 horizontal cables. Kits can be use on both level and stair surfaces.



FULL FRAME DECK/STAIR KITS

6' x 36" Victorian	P/N HC381606
8' x 36" Victorian	P/N HC381608
6' x 36" Alta	P/N HC881606
8' x 36" Alta	P/N HC881608



TOP RAIL DECK/STAIR KITS

6' x 36" Victorian	P/N HC301606
8' x 36" Victorian	P/N HC301608
8' x 36" Alta	P/N HC801606
6' x 36" Alta	P/N HC801608

B=Black, W=White, Z=Bronze

Horizontal
Cable
Railing
System
available
early 2022



Full Frame Kits (with bottom rail)



Top Rail Kits (no bottom rail)



HORIZONTAL CABLE 3" ALUMINUM POST KITS

These pre-drilled posts are required for the horizontal cable systems. Kits include: assembled post and base plate, post cap and post base plate vinyl skirt. Stair end posts include beveled washers. All posts below are for the 36" horizontal cable system. 42" posts are used for stair applications.

3" x 36" End Post	P/N PC641636
3" x 36" Inline Post	P/N PC641736
3" x 36" Corner Post	P/N PC641936
3" x 42" Stair Inline Post	P/N PC641842
3" x 42" Stair Bottom/End Post	P/N PC641542

B=Black, W=White, Z=Bronze

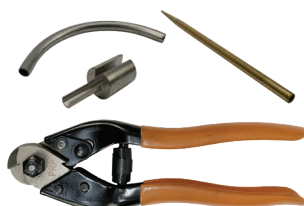
Post-to-deck mount screws/anchors sold separately. 3" x 3" Posts actual lengths are 38.25" and 43.5".



HORIZONTAL CABLE KITS

These kits are designed for the horizontal cable systems. Each kit includes: (1) 1/8" stainless steel cable with pre-attached threaded stud in 5' to 60' lengths (increments of 5'), (1) 1/8" threaded receiver fitting, (1) 1/8" fast receiver fitting and (2) stainless end caps. Full Frame Kits require 9 cables. Top Rail Kits require 10 cables. If exceeding 60' in length, another cable kit and two end posts are required to start another run.

5' Horizontal Cable Kit P/N CW60305	35' Horizontal Cable Kit P/N CW60335
10' Horizontal Cable Kit P/N CW60310	40' Horizontal Cable Kit P/N CW60340
15' Horizontal Cable Kit P/N CW60315	45' Horizontal Cable Kit P/N CW60345
20' Horizontal Cable Kit P/N CW60320	50' Horizontal Cable Kit P/N CW60350
25' Horizontal Cable Kit P/N CW60325	55' Horizontal Cable Kit P/N CW60355
30' Horizontal Cable Kit P/N CW60330	60' Horizontal Cable Kit P/N CW60360



CABLE TOOLS

Cable Threading Tool	TC697701
90° Cable Threading Tool	TC697702
Cable Release Tool	TC697102
Stainless Steel Cable Cutter	TC697703

GATE KITS



GATE KITS

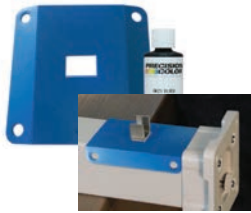
Kits include gate, self-closing hinges and keyed latching hardware. For openings up to 50" wide. Actual heights: 33.9" and 39.5", actual width: 48".

36" x 48" – HG07518 42" x 48" – HG07520

B=Black, W=White, Z=Bronze



HARDWARE



Rail Clip Jig/Touch-Up Paint

Ensures proper placement of the lower rail clips when attaching to posts. Touch-up paint is included for use when cutting extrusions.

P/N HJ39700

B=Black, W=White, Z=Bronze



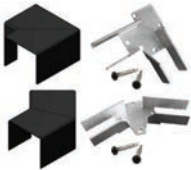
Deck & Stair Panel Attach Kit

Required when deck or stair panel is cut and attaching more than one section. P/N HC39500



45° Wall Mount Kit

Required for 45° wall applications. Not to be used for post applications. P/N HC06445



Alta Corner Kits

90° Corner P/N HC801290

45° Corner P/N HC801245

B=Black, W=White, Z=Bronze



Glass Panel Attach Kit

Required when deck panel is cut and attaching more than one section. P/N HC03400

B=Black, W=White, Z=Bronze



Cut Collar Kits

For applications with a top snap. Cover mis-cuts to a top rail snap and bottom rail.

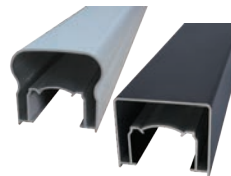
Victorian Deck P/N VT361202

Victorian Stair P/N VT351202

Alta Deck P/N AL061202

Alta Stair P/N AL051202

B=Black, W=White, Z=Bronze



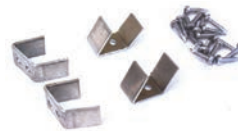
Continuous Top Rail Snap

For use with continuous rail panels and 2" posts. 18' Length.

Victorian P/N VT393118

Alta P/N AL893118

B=Black, W=White, Z=Bronze, M=Mahogany, O=Oak (Victorian only)



22.5° Panel Attach Kit

Required for 45° deck corners. Refer to installation instructions for proper post placement.

P/N HC06422



Straight Wall Mount Kit for Baluster and Glass Panels

Used to secure deck panels to structural surface without a post for support.

Victorian P/N HC39100

Alta P/N HC89100

B=Black, W=White, Z=Bronze



22.5° Glass Panel Attach Kit

Required for 45° deck corners. Refer to installation instructions for proper post placement.

P/N HC03422

B=Black, W=White, Z=Bronze



Bottom Snap Collar Kits

For applications without a top snap. Cover mis-cuts to top or bottom rails.

Deck P/N BH061202

Stair P/N BH051202

B=Black, W=White, Z=Bronze



Top Rail End Caps

For use with the continuous rail system.

Victorian P/N VE19400

Alta P/N AL825101

B=Black, W=White, Z=Bronze

LIGHTING AND ACCESSORIES



3" LED Post Cap Perimeter Light

.3 watts, 3 LEDs, 39 Lumens, 4,000 Kelvin
P/N: LE045310
B=Black, W=White, Z=Bronze



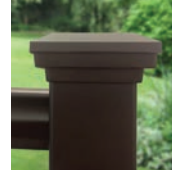
3" LED Post Cap Indirect Light

1.2 watts, 12 LEDs (3 LEDs per side),
156 Lumens, with an approximate effective
Lumen output of 39 Lumens, 4,000 Kelvin
P/N: LE045311
B=Black, W=White, Z=Bronze



Solar 3" LED Post Cap Perimeter Light

3 Lumens, 3,000 Kelvin
P/N: LS045310
B=Black, W=White, Z=Bronze



3" Low Profile Post Cap

(without light)
P/N CC025303
B=Black, W=White, Z=Bronze



Power Pack
12V 100W single tap,
built in adjustable
timer and photo cell
P/N: LE095101



UR Wire Connectors
10 Pack. Replacement
part; also included with
post cap lights.
P/N LE095104



100' 16/2 GA Wire
P/N LE095103

REPLACEMENT PARTS

RAILING PANEL PARTS

Victorian Top Rail Snap – 6'	VT393106
Victorian Top Rail Snap – 8'	VT393108
Alta Top Rail Snap – 6'	AL893106
Alta Top Rail Snap – 8'	AL893108
Bottom Rail Snap – 6'	SH093106
Bottom Rail Snap – 8'	SH093108
Victorian Continuous Top Rail Snap – 18' Length	VT393118
Alta Continuous Top Rail Snap – 18' Length	AL893118

SMALL PARTS

Support Leg w/ color screw	SL09403K
----------------------------	----------

3" POST PARTS

Base Plate Vinyl Skirt for 3" Post	BC015305
Post Cap for 3" Post (Standard)	CC044300
Low Profile 3" Post Cap	CC025303

2" POST PARTS

Base Plate Vinyl Skirt for 2" Post	BC015204
2" Crossover Bracket	CL044204
2" Stair Crossover Bracket	CL04425

HARDWARE

#8x3/4" Self-tapping Screws 16/pack	ST09934K
#8 x 1 1/2" Self-tapping Screws – 20 pack	ST099320
#14 x 1 1/2" Self-tapping Screws – 20 pack	ST099520
M8 x 80mm Stainless Steel Hex Head (13mm) Screw – 1 ct.	SS009880

B=Black, W=White, Z=Bronze, M=Mahogany, O=Oak
(where applicable)

For complete installation instructions,
visit HarmonyRailing.com.



Open Mid-Rail System with Continuous Top Rail
Custom ordered product. Not available in all areas.



Baluster Panel System with Oak Top Rails

HARMONY ADA HANDRAIL KITS



ADA Pipe Rail and 90° Return Kit

Kit includes:

- 1 – 94" Pipe
- 2 – 90° Returns
- 2 – 90° Return Covers
- 2 – 3" Post Backer Plates
- 2 – Joiner Rings
- 6 – #10 x 1½" Self-tapping Screws
- 4 – #8 x ¾" Color Matched Self-tapping Screws
- Installation Instructions

P/N: AD901102

B=Black, W=White, Z=Bronze



ADA Pipe Rail Extension Kit

Kit includes:

- 1 – 94" Pipe
- 2 – 6" Joiners
- 2 – Joiner Rings
- 2 – Rail Support Brackets with adapters
- 2 – 3" Post Backer Plates
- 2 – Support Bracket Caps
- 6 – #10 x 1½" Self-tapping Screws
- 8 – #8 x ¾" Color Matched Self-tapping Screws
- Installation Instructions

P/N: AD901103

B=Black, W=White, Z=Bronze



ADA 90° Return Kit

Required when Pipe Rail is cut into two pieces. Does not include 94" pipe rail.

Kit includes:

- 2 – 90° Returns
- 2 – 90° Return Covers
- 2 – 3" Post Backer Plates
- 2 – Joiner Rings
- 6 – #10 x 1.5" Self-tapping Screws
- 4 – #8 x ¾" Color Matched Self-tapping Screws
- Installation Instructions

P/N: AD901101

B=Black, W=White, Z=Bronze

ADA handrails can be used for stairs, ramps and horizontal applications.



ADA Handicap Loop Kit

Kit includes:

- 2 – Handicap Loops
- 2 – Rail Support Brackets with adapters
- 2 – Adjustable Elbows
- 2 – 3" Post Backer Plates
- 12 – #8 x ¾" Self-tapping Screws
- 6 – #10 x 1½" Self-tapping Screws
- Installation Instructions

P/N: AD901104

B=Black, W=White, Z=Bronze

Find Instructions and Install videos at HarmonyRailing.com.



ADA Hand Railing

1.5" x 94"
P/N AD903194



90° Wall Return

P/N AD905118



ADA Support Bracket

Use on 2" and 3" Posts.
P/N AD908102



Inside Corner Mount

P/N AD908599



Internal Pipe Joiner

P/N AD905178



ADA Handrail Return

P/N AD905168



Straight End Wall Mount

P/N AD905128



ADA 90° Elbow

P/N AD905158



ADA 5° Elbow

P/N AD905105



ADA 30° Elbow

P/N AD905130



ADA 34° Elbow

P/N AD905134



ADA 38° Elbow

P/N AD905138

Order 4X #8x¾" screws for each elbow (sold separately).



ADA Adjustable Elbow

P/N AD958204

Order 4X #8x¾" screws for each elbow (sold separately).



ADA 1.5" Joint Ring

P/N AD905188



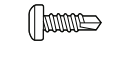
ADA End Cap

Available in black only.
P/N AD905198



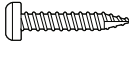
3" Post Backer Plate

P/N AD905248



Rail to Bracket Attach Screws

#8 x ¾" Self-tapping Screw. 20-pack. P/N ST091820
B=Black, W=White, Z=Bronze



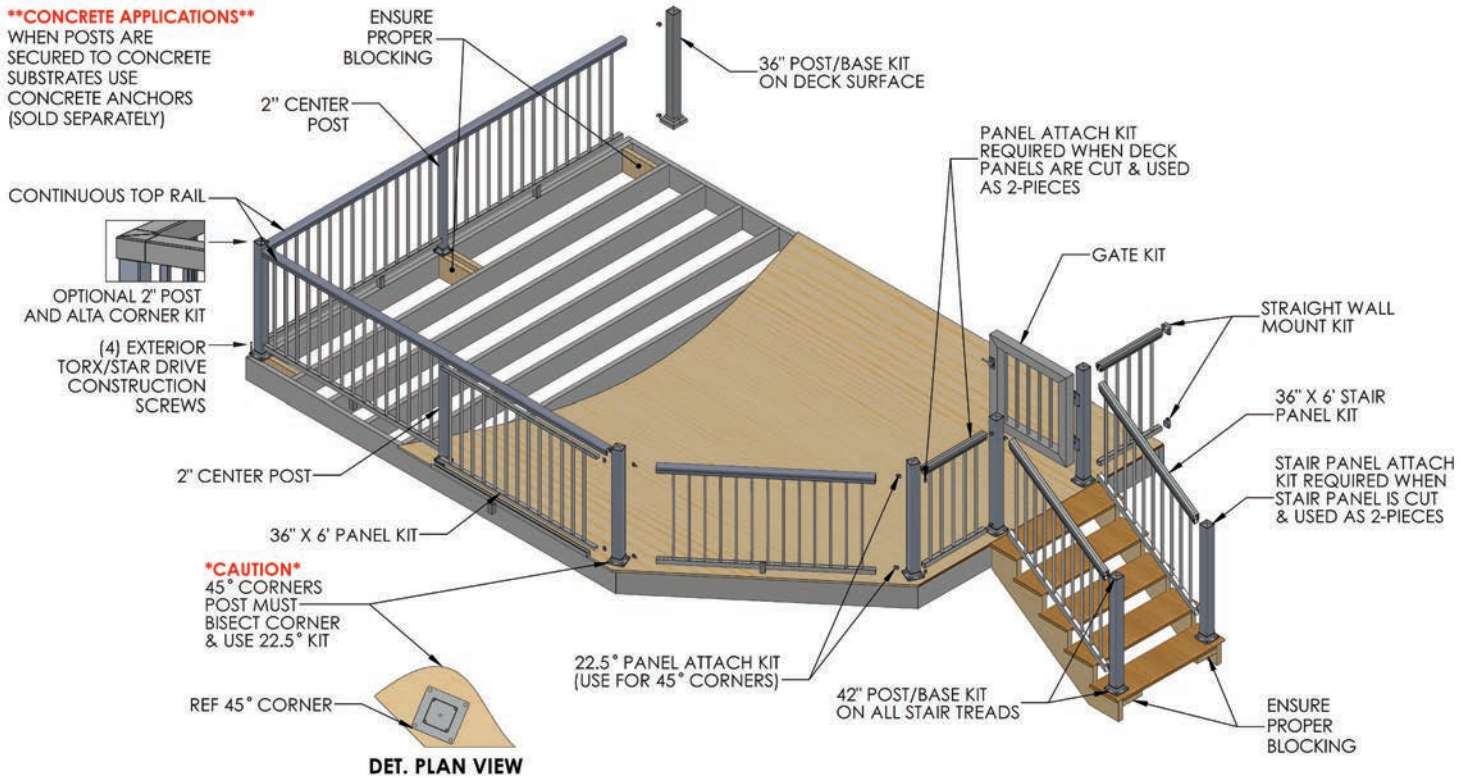
Bracket to Metal Post & Support Bracket Attach Screws

#10 x 1½" Self-tapping Screw. 20-pack. P/N ST091020

HARMONY RAILING™ BALUSTER PANEL PLANNER

CONCRETE APPLICATIONS

WHEN POSTS ARE SECURED TO CONCRETE SUBSTRATES USE CONCRETE ANCHORS (SOLD SEPARATELY)



WHAT YOU WILL NEED

VICT.
P/N

ALTA
P/N

QTY

PREASSEMBLED ALUMINUM BALUSTER PANELS

6' x 36" Baluster Panel (actual length 69.43")	HR362306	HR862306	
6' x 42" Baluster Panel (actual length 69.43")	HR362406	HR862406	
8' x 36" Baluster Panel (actual length 91.31")	HR362308	HR862308	
8' x 42" Baluster Panel (actual length 91.31")	HR362408	HR862408	
6' x 36" Continuous Rail (act. lgth 69.43")*	HR062306		
6' x 42" Continuous Rail (act. lgth 69.43")*	HR062406		
8' x 36" Continuous Rail (act. lgth 91.31")*	HR062308		
8' x 42" Continuous Rail (act. lgth 91.31")*	HR062408		

PREASSEMBLED ALUMINUM BALUSTER STAIR PANELS

6' x 36" Stair Panel (actual length 69.43")	HS352306	HS852306	
8' x 36" Stair Panel (actual length 91.31")	HS352308	HS852308	
6' x 36" Continuous Stair Panel (69.43")*	HS052306		
6' x 42" Continuous Stair Panel (69.43")*	HS052406		
8' x 36" Continuous Stair Panel (91.31")*	HS052308		
8' x 42" Continuous Stair Panel (91.31")*	HS052408		

*Top rails sold separately with Continuous Rail and Continuous Stair Panels.

Part Number Plus Color Identifier: B=Black, W=White, Z=Bronze, M=Mahogany, O=Oak

Prior to construction, check with your local regulatory agency for special code requirements in your area. Common railing height is 36" or 42". Never span posts more than 8' on center for baluster railing systems and 6' on center for glass railing systems. Always ensure there is proper blocking under each post as per installation instructions. Read installation instructions and view installation videos to get a complete understanding of how the Harmony Railing™ products assemble.

Written installation instructions and videos can be found online at HarmonyRailing.com.

HELPFUL ORDERING INFORMATION:

- Baluster section kits include attachment clips and screws. If panels are cut and two pieces are used for installation, a separate attachment kit must be purchased.
- Anchors and fasteners to secure posts to concrete or wood are **NOT INCLUDED** in kits.
- Maximum post spacing on deck for baluster railing is 8' on center and glass railing is 6' on center.
- If using 1/4" tempered glass panel kit, glass panels must be purchased separately from a local glass company.

WHAT YOU WILL NEED

VICT.
P/N

ALTA
P/N

QTY

ALUMINUM POST KITS

INCLUDES: POST AND BASE PLATE, POST CAP, AND POST BASE VINYL SKIRT.

36" x 3" Post Kit (actual length 38.25")	HK441336	
42" x 3" Post Kit (actual length 43.5")	HK441342	
48" x 3" Post Kit (actual length 48")	HK441348	
36" x 2" Post Kit (actual length 34.06")	HK341236	
42" x 2" Post Kit (actual length 39.625")	HK341242	
48" x 2" Post Kit (actual length 48")	HK341248	

ADDITIONAL KITS

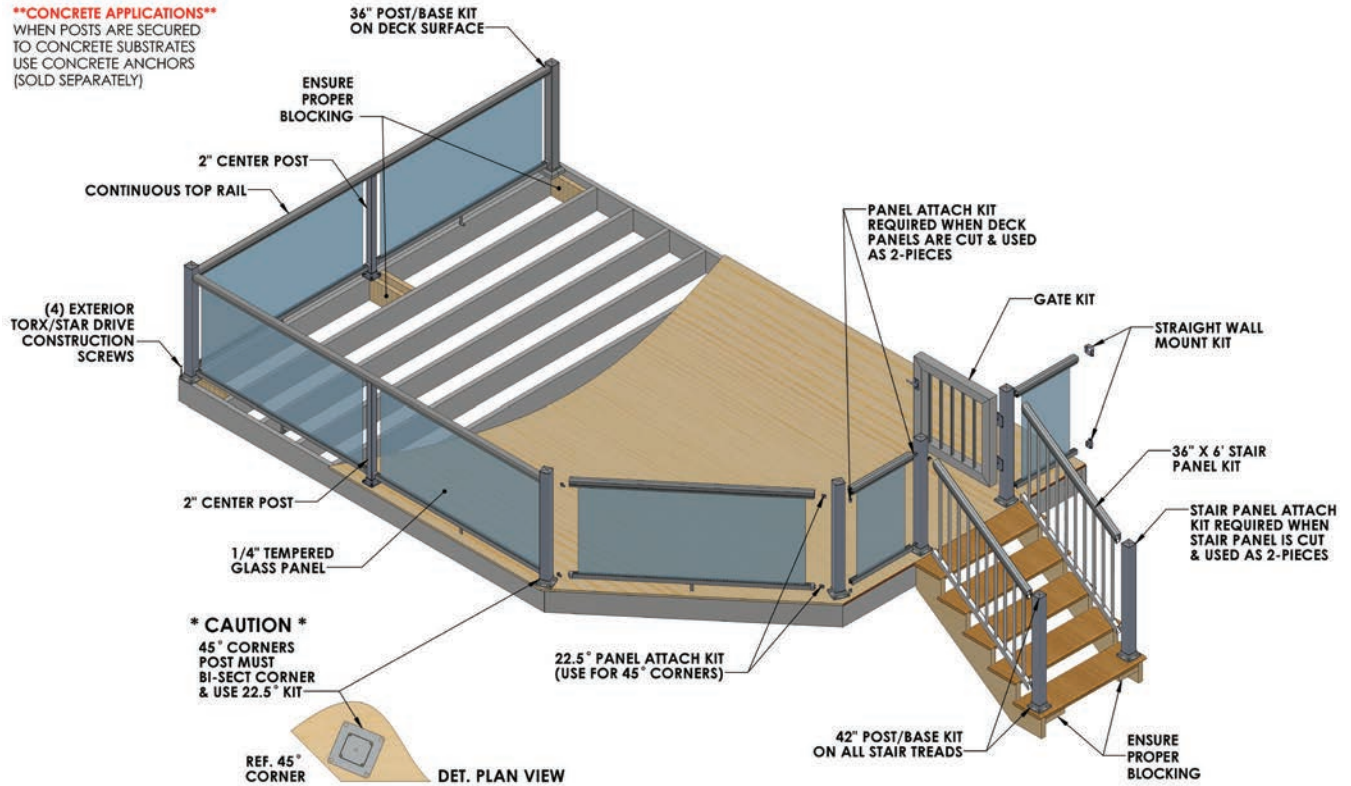
Continuous Top Rail - 18' (B,W,Z)	VT393118	AL893118	
Wood Grain Continuous Top Rail - 18' (G,O)	VT393118	N/A	
Wood Grain Top Rail - 8' (G,O)	VT393108	N/A	
Deck & Stair Panel Attach Kit	HC39500		
22.5° Panel Attach Kit	HC06422		
45° Wall Mount Kit	HC06445		
Straight Wall Mount Kit	HC39100	HC89100	
Rail Clip Jig/Touch-Up Paint	HJ39700		
36" Gate Kit (adjustable up to 50" wide)	HG07518		
42" Gate Kit (adjustable up to 50" wide)	HG07520		

IMPORTANT NOTES:

- Actual baluster panel sizes: 6' Panels = 69.43"; 8' Panels = 91.31".
- 3" posts are required to reach 6' & 8' lengths.
- Stair railing panels are shipped at a 37° angle. Panels are adjustable and will accommodate 30-40° stair angles.
- CAUTION:** Over adjusting stair panels will cause loose and rattling balusters.
- 45° deck angles require 22.5° clips applied to each side of the post. The 22.5° clip kit is sold **SEPARATELY**.
- Using 2 Posts at top of stairs is recommended if compound angle cut is required.

1/4" TEMPERED GLASS RAILING PLANNER

****CONCRETE APPLICATIONS****
WHEN POSTS ARE SECURED TO CONCRETE SUBSTRATES USE CONCRETE ANCHORS (SOLD SEPARATELY)



WHAT YOU WILL NEED	VICT. P/N	ALTA P/N	QTY
GLASS FRAME SECTIONS			
6' Aluminum Frame for Full 1/4" Tempered Glass Panel (Actual length 69.43", Top Rail not included)	HG031206		
Top Rail Snap – 69.43"	VT393106	AL893106	
1/4" Tempered Glass Panels (Must be ordered from a local glass company)	N/A	N/A	
PREASSEMBLED ALUMINUM BALUSTER STAIR PANELS			
6' x 36" Stair Panel (actual length 69.43")	HS352306	HS852306	
8' x 36" Stair Panel (actual length 91.31")	HS352308	HS852308	
6' x 36" Continuous Stair Panel (69.43")*	HS052306		
6' x 42" Continuous Stair Panel (69.43")*	HS052406		
8' x 36" Continuous Stair Panel (91.31")*	HS052308		
8' x 42" Continuous Stair Panel (91.31")*	HS052408		

*Top rails sold separately with Glass Frame Sections, Continuous Rail and Continuous Stair Panels.

Part Number Plus Color Identifier: B=Black, W=White, Z=Bronze, M=Mahogany, O=Oak

WHAT YOU WILL NEED	VICT. P/N	ALTA P/N	QTY
ALUMINUM POST KITS			
INCLUDES: POST AND BASE PLATE, POST CAP, AND POST BASE VINYL SKIRT.			
36" x 3" Post Kit (actual length 38.25")	HK441336		
42" x 3" Post Kit (actual length 43.5")	HK441342		
48" x 3" Post Kit (actual length 48")	HK441348		
36" x 2" Post Kit (actual length 34.06")	HK341236		
42" x 2" Post Kit (actual length 39.625")	HK341242		
48" x 2" Post Kit (actual length 48")	HK341248		
ADDITIONAL KITS			
Continuous Top Rail - 18' (B,W,Z)	VT393118	AL893118	
Wood Grain Continuous Top Rail - 18' (G,O)	VT393118	N/A	
Wood Grain Top Rail - 8' (G,O)	VT393108	N/A	
Glass Panel Attach Kit	HC03400		
22.5° Glass Panel Attach Kit	HC03422		
45° Wall Mount Kit	HC06445		
Straight Wall Mount Kit	HC39100	HC89100	
Rail Clip Jig/Touch-Up Paint	HJ39700		
36" Gate Kit (adjustable up to 50" wide)	HG07518		
42" Gate Kit (adjustable up to 50" wide)	HG07520		

Prior to construction, check with your local regulatory agency for special code requirements in your area. Common railing height is 36" or 42". Never span posts more than 8' on center for baluster railing systems and 6' on center for glass railing systems. Always ensure there is proper blocking under each post as per installation instructions. Read installation instructions and view installation videos to get a complete understanding of how the Harmony Railing™ products assemble.

Written installation instructions and videos can be found online at HarmonyRailing.com.

HELPFUL ORDERING INFORMATION:

- Baluster section kits include attachment clips and screws. If panels are cut and two pieces are used for installation, a separate attachment kit must be purchased.
- Anchors and fasteners to secure posts to concrete or wood are **NOT INCLUDED** in kits.
- Maximum post spacing on deck for baluster railing is 8' on center and glass railing is 6' on center.
- If using 1/4" tempered glass panel kit, glass panels must be purchased separately from a local glass company.

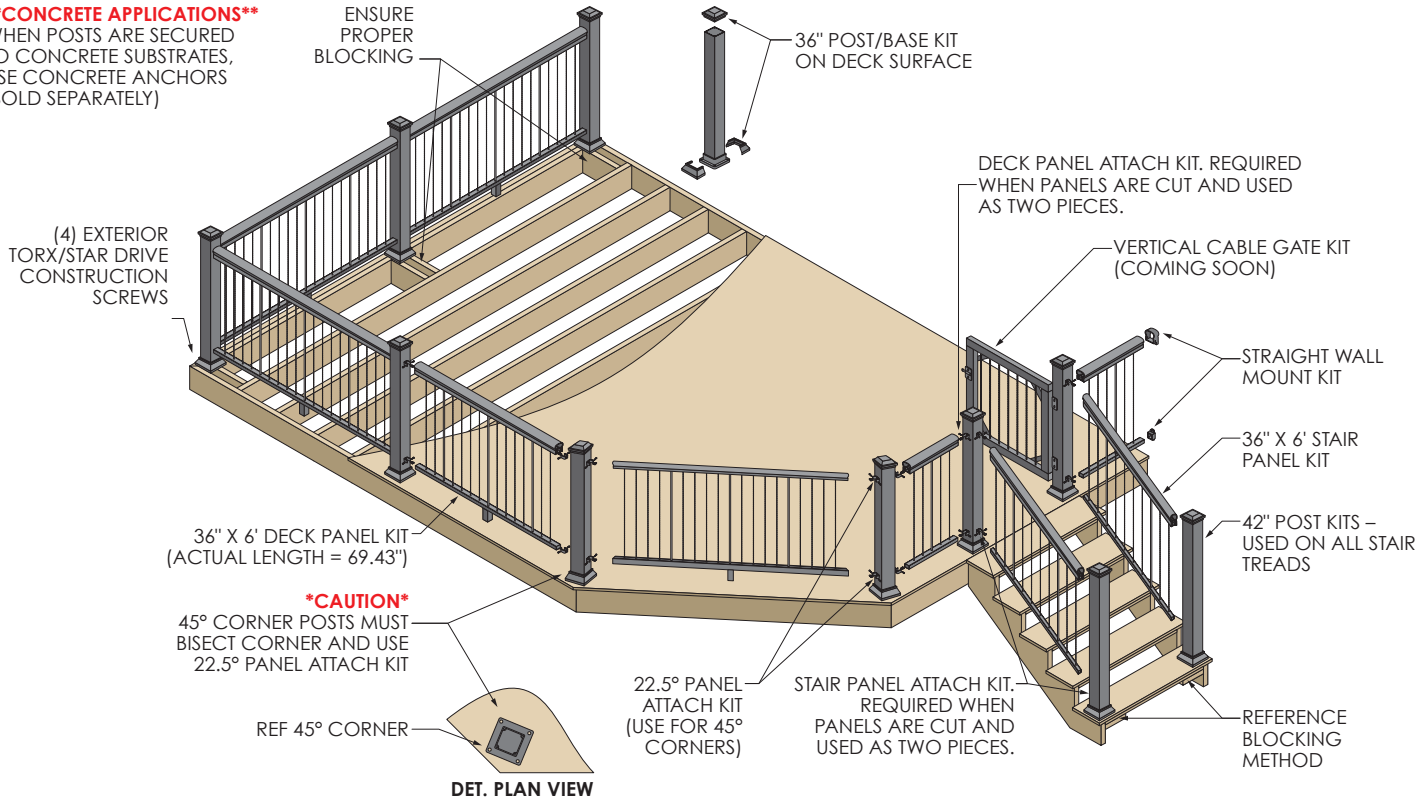
IMPORTANT NOTES:

- Actual baluster panel sizes: 6' Panels = 69.43"; 8' Panels = 91.31".
- 3" posts are required to reach 6' & 8' lengths.
- Stair railing panels are shipped at a 37° angle. Panels are adjustable and will accommodate 30-40° stair angles.
- CAUTION:** Over adjusting stair panels will cause loose and rattling balusters.
- 45° deck angles require 22.5° clips applied to each side of the post. The 22.5° clip kit is sold **SEPARATELY**.
- Using 2 Posts at top of stairs is recommended if compound angle cut is required.

VERTICAL CABLE RAILING PLANNER

CONCRETE APPLICATIONS

WHEN POSTS ARE SECURED TO CONCRETE SUBSTRATES, USE CONCRETE ANCHORS (SOLD SEPARATELY)



WHAT YOU WILL NEED	VICT. P/N	ALTA P/N	QTY
VERTICAL CABLE RAILING PANELS			
6' x 36" Vertical Cable Panel (actual length 69.43")	VC362306	VC862306	
6' x 36" Vertical Cable Stair Panel (actual lgth 69.43")	VC352306	VC852306	
ALUMINUM POST KITS INCLUDES: POST AND BASE PLATE, POST CAP, AND POST BASE VINYL SKIRT.			
36" x 3" Post Kit (actual length 38.25")	HK441336		
42" x 3" Post Kit (actual length 43.5")	HK441342		
48" x 3" Post Kit (actual length 48")	HK441348		
36" x 2" Post Kit (actual length 34.06")	HK341236		
42" x 2" Post Kit (actual length 39.625")	HK341242		
48" x 2" Post Kit (actual length 48")	HK341248		

WHAT YOU WILL NEED	VICT. P/N	ALTA P/N	QTY
ADDITIONAL KITS			
Top Rail Snap – 6'	VT393106	AL893106	
Deck & Stair Panel Attach Kit	HC39500		
22.5° Panel Attach Kit	HC06422		
45° Wall Mount Kit	HC06445		
Straight Wall Mount Kit	HC39100	HC89100	
Rail Clip Jig/Touch-Up Paint	HJ39700		
36" Gate Kit (adjustable up to 50" wide)	HG07518		
42" Gate Kit (adjustable up to 50" wide)	HG07520		

Part Number Plus Color Identifier: B=Black, W=White, Z=Bronze, M=Mahogany, O=Oak (where applicable)

Prior to construction, check with your local regulatory agency for special code requirements in your area. Common railing height is 36" or 42". Never span posts more than 8' on center for baluster railing systems and 6' on center for glass railing systems. Always ensure there is proper blocking under each post as per installation instructions. Read installation instructions and view installation videos to get a complete understanding of how the Harmony Railing™ products assemble.

HELPFUL ORDERING INFORMATION:

- Baluster section kits include attachment clips and screws. If panels are cut and two pieces are used for installation, a separate attachment kit must be purchased.
- Anchors and fasteners to secure posts to concrete or wood are **NOT INCLUDED** in kits.
- Maximum post spacing on deck for vertical cable railing is 6' on center.

Written installation instructions and videos can be found online at HarmonyRailing.com.

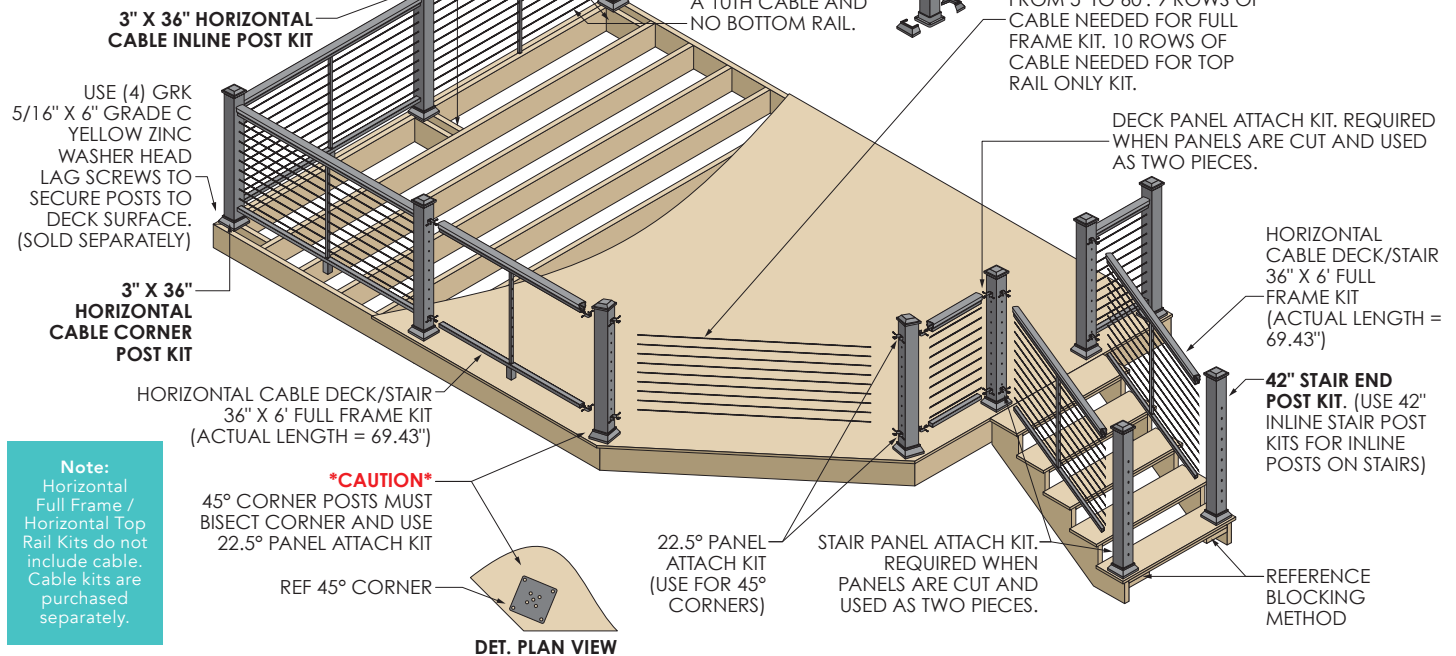
IMPORTANT NOTES:

- Actual 6' panel length = 69.43".
- 3" posts are required to reach 6' lengths.
- Stair railing panels will accommodate 30-40° stair angles.
- 45° deck angles require 22.5° clips applied to each side of the post. The 22.5° clip kit is sold **SEPARATELY**.
- Using 2 Posts at top of stairs is recommended if compound angle cut is required.

HORIZONTAL CABLE RAILING PLANNER

CONCRETE APPLICATIONS

WHEN POSTS ARE SECURED TO CONCRETE SUBSTRATES, USE TAPCON® 5/16" X 3" HEX WASHER HEAD CONCRETE ANCHORS (SOLD SEPARATELY)



Note:

Horizontal Full Frame / Horizontal Top Rail Kits do not include cable. Cable kits are purchased separately.

CAUTION

45° CORNER POSTS MUST BISECT CORNER AND USE 22.5° PANEL ATTACH KIT

REF 45° CORNER

DET. PLAN VIEW

WHAT YOU WILL NEED	VICT. P/N	ALTA P/N	QTY
HORIZONTAL CABLE RAILING FRAME KITS			
6' x 36" Horizontal Cable Deck/Stair Full Frame Kit (Use for both level and stair applications. Actual length is 69.43")	HC381606	HC881606	
6' x 36" Horizontal Cable Deck/Stair Top Rail Kit (Use for both level and stair applications. Actual length is 69.43")	HC301606	HC801606	
8' x 36" Horizontal Cable Deck/Stair Full Frame Kit (Use for both level and stair applications. Actual length is 91.31")	HC381608	HC881608	
8' x 36" Horizontal Cable Deck/Stair Top Rail Kit (Use for both level and stair applications. Actual length is 91.31")	HC301608	HC801608	
HORIZONTAL CABLE KITS			
5' Horizontal Cable Kit	CW60305		
10' Horizontal Cable Kit	CW60310		
15' Horizontal Cable Kit	CW60315		
20' Horizontal Cable Kit	CW60320		
25' Horizontal Cable Kit	CW60325		
30' Horizontal Cable Kit	CW60330		
35' Horizontal Cable Kit	CW60335		
40' Horizontal Cable Kit	CW60340		
45' Horizontal Cable Kit	CW60345		
50' Horizontal Cable Kit	CW60350		
55' Horizontal Cable Kit	CW60355		
60' Horizontal Cable Kit	CW60360		

WHAT YOU WILL NEED	VICT. P/N	ALTA P/N	QTY
HORIZONTAL CABLE ALUMINUM POST KITS			
INCLUDES: POST AND BASE PLATE, POST CAP, AND POST BASE VINYL SKIRT.			
36" x 3" Horizontal Cable End Post Kit (actual length = 38.25")	PC641636		
36" x 3" Horizontal Cable Inline Post Kit (actual length = 38.25")	PC641736		
36" x 3" Horizontal Cable Corner Post Kit (actual length = 38.25")	PC641936		
42" x 3" Horizontal Cable Inline Stair Post Kit (actual length = 43.5")	PC641842		
42" x 3" Horizontal Cable Stair Bottom End Post Kit (actual length = 43.5")	PC641542		
TOOLS			
Cable Threading Tool	TC697701		
90° Cable Threading Tool	TC697702		
Cable Release Tool	TC697102		
Stainless Steel Cable Cutter	TC697703		
ADDITIONAL KITS			
Top Rail Snap – 6'	VT393106	AL893106	
Deck & Stair Panel Attach Kit	HC39500		
22.5° Panel Attach Kit	HC06422		
Rail Clip Jig/Touch-Up Paint	HJ39700		
36" Gate Kit (adjustable up to 50" wide)	HG07518		
42" Gate Kit (adjustable up to 50" wide)	HG07520		

Part Number Plus Color Identifier: B=Black, W=White, Z=Bronze

Prior to construction, check with your local regulatory agency for special code requirements in your area. Common railing height is 36" or 42". Never span posts more than 8' on center for horizontal cable railing systems. Always ensure there is proper blocking under each post as per installation instructions. Read installation instructions and view installation videos to get a complete understanding of how the Harmony Railing™ products assemble.

HELPFUL ORDERING INFORMATION:

1. Frame kits include attachment clips and screws. If panels are cut and two pieces are used for installation, a separate attachment kit must be purchased.
3. Anchors and fasteners to secure posts to concrete or wood are **NOT INCLUDED** in kits.
4. Maximum post spacing on deck and stairs for horizontal cable railing is 8' on center.

IMPORTANT NOTES:

- Actual baluster panel sizes: 6' Panels = 69.43"; 8' Panels = 91.31".
- 3" posts are required to reach 6' & 8' lengths.
- 45° deck angles require 22.5° clips applied to each side of the post. The 22.5° clip kit is sold **SEPARATELY**.
- Using 2 Posts at top of stairs is recommended if compound angle cut is required.

SYSTEM EVALUATION

Harmony Railing™ (Harmony) aluminum baluster systems have been evaluated for structural integrity by an independent laboratory as per ICC-ES AC273 – acceptance criteria (approved/revised October 2020) for handrails and guards. The Harmony aluminum railing systems have been evaluated with ½" x ¾" aluminum balusters (6063-T5) assembled using the patented UltraLox Interlocking™ assembly process by which guardrail infill components are press-locked together. Harmony's ¼" tempered glass panel system (ANSI Z97.1 tempered glass) has been evaluated with a total railing span of 72" with a Harmony 3" post attached at each end and secured to a concrete substrate with 4-Hilti KH-EZ ¼" x 3" concrete anchors. When the guardrail is installed in configurations other than described in the installation instructions, the installation configuration and fastening detail must be specified by a licensed engineer.

When Harmony aluminum railing systems are assembled under the conditions described above, the railings meet the guardrail requirements of 1607.7.1.1 of the 2018 International Building Code (IBC).

When the Harmony guardrail is installed in configurations other than described above, each installation shall be designed using numerical calculation methods by a registered professional engineer licensed in the state in which the project is constructed. Sealed shop drawings shall be made available to interceded parties to demonstrate compliance with application in which the project is constructed.

If Harmony railings are installed contrary to the specific assembly described above and sealed engineering drawings are not available, then the railing is intended for decorative purposes only and cannot be used in applications where structural railing systems are required by local or international building code.

The diagrams and instructions provided with each system are for illustration purposes only and are not meant to replace a licensed professional. Any construction or use of the product must be in accordance with all local zoning and/or building codes. The consumer assumes all risks and liability associated with the construction or use of this product. The consumer or contractor should take all necessary steps to ensure the safety of everyone involved in the project, including, but not limited to, wearing the appropriate safety equipment. Except as contained in the written limited warranty, Harmony does not provide any other warranty; either expressed or implied, and shall not be liable for any damages, including consequential damages.

© 2020, Harmony Railing™ is a WES LLC Company
HarmonyRailing.com

HARMONY RAILING™ 20-YEAR LIMITED WARRANTY

Harmony Railing™ warrants its railing products to be free from manufacturing defects in material and workmanship to the original consumer purchaser. In addition to manufacturing defects, this warranty covers cracking, peeling and blistering of the finish of our products.

This warranty does not cover damage caused by abnormal or improper use, improper product installation, accidents, alterations, welding, neglect, damage by lawn care equipment, abrasion, harsh chemicals, pool chemicals, snow and ice removal chemicals, air pollutants, improper service or lack of and damage caused by fire, flood or acts of God. This warranty does not cover corrosion from cuts, scratches, dents or nicks. Products in a residential installation located 1 mile or less from any coast line shall have a 3-year Limited Warranty from the date of purchase. Products in direct contact with salt water do not qualify for any Harmony Railing™ warranty.

CLAIM PROCEDURE

To make a claim under this Warranty to receive replacement product, the original consumer must, within 90 days of actual or constructive notice of any covered defect in the product, do the following:

- (1) Prepare a letter that includes the following:
 - a. A list of the number of pieces and the size of each piece for which the claim is made.
 - b. Proof of Purchase of the products, as shown on the original invoice.
 - c. Proof of Warranty – Original purchaser or homeowner must have registered their product online at HarmonyRailing.com within 60 days of purchase date.
- (2) Mail the above to:
Harmony Railing
2737 West Service Road
Eagan, MN 55121
- (3) Email to: warranty@harmonyrailing.com

CONDITIONS AND EXCLUSIONS OF THIS WARRANTY:

CLEANING AND CARE INSTRUCTION AS PER EXHIBIT A MUST BE FOLLOWED.

THIS WARRANTY IS NOT TRANSFERABLE. THE AMOUNT OF YOUR RESTITUTION, IF ELIGIBLE, WILL NOT INCLUDE LABOR TO REMOVE THE EXISTING PRODUCT OR INSTALL ANY REPLACEMENT COMPONENTS, SHIPPING CHARGES, SALES TAX OR ANY OTHER CHARGES, NOR WILL HARMONY RAILING™ PROVIDE SUCH LABOR OR SERVICE.

THIS LIMITED WARRANTY IS IN LIEU OF ALL OTHER EXPRESS WARRANTIES. HARMONY RAILING™ MAKES NO OTHER EXPRESS WARRANTIES AND DOES NOT AUTHORIZE ANY OTHER PERSON OR AGENT TO MAKE ANY OTHER EXPRESS WARRANTIES. HARMONY RAILING™ NEITHER ASSUMES NOR AUTHORIZES ANY OTHER LIABILITY OR OBLIGATION IN WARRANTY, INCLUDING WITHOUT LIMITATION, THE IMPLIED WARRANTIES OF MERCHANTABILITY AND FITNESS FOR A PARTICULAR PURPOSE WITH RESPECT TO THEIR PRODUCTS. IN NO EVENT SHALL HARMONY RAILING™ BE LIABLE FOR ANY CONSEQUENTIAL, SPECIAL OR INCIDENTAL DAMAGES ARISING OUT OF OR CONNECTED WITH THE PURCHASE OR USE OF THEIR PRODUCTS OR FOR ANY BREACH OF WARRANTY.

SOME STATES DO NOT ALLOW LIMITATIONS ON HOW LONG AN IMPLIED WARRANTY LASTS OR THE EXCLUSION OR LIMITATION OF INCIDENTAL OR CONSEQUENTIAL DAMAGES, SO THE ABOVE LIMITATIONS OR EXCLUSIONS MAY NOT APPLY TO YOU. THIS WARRANTY GIVES YOU SPECIFIC LEGAL RIGHTS, AND YOU MAY HAVE OTHER RIGHTS THAT VARY FROM STATE TO STATE. THIS WARRANTY IS APPLICABLE ONLY TO SYSTEMS INSTALLED WITHIN THE CONTINENTAL UNITED STATES AND CANADA.

HARMONY RAILING™ PRODUCTS

CLEANING AND MAINTENANCE GUIDE

BACKGROUND

Harmony Railing™ architectural powder coatings are organic coatings that must be regularly cleaned and maintained in order to ensure the decorative and protective properties of the coatings are retained. Records of all cleaning schedules and frequencies shall be kept and maintained by the customer according to the process outlined below and shall be available to Harmony Railing™ upon request.

CLEANING METHOD

Usual maintenance of Products must adhere to the following steps:

- Clean using an appropriate cleaning product, as defined below.
- Rinse with clear water.
- Wipe with a soft cloth.
- All surfaces shall be cleaned using a soft cloth or sponge, and no cloth shall be harsher than natural bristle brushes.

If the Product is subject to any hazardous and unusual environmental factors or is located within one (1) mile of the seashore, an estuary or marine environment, Harmony Railing™ must be consulted on an individual project basis for best maintenance practices.

CLEANING PRODUCTS

Before cleaning, the customer must consult and adhere to the underlying instructions contained within the Product Data Sheet available online at HarmonyRailing.com.

Usual maintenance cleaning may be done using water with a mild detergent (pH 5 to 8).

If atmospheric pollution has resulted in heavy soiling of the coating, some stains or marks may require stronger domestic products, such as alcohol, petroleum spirits, white spirits or bleach diluted to five percent (5%). In this instance, the customer must rinse the coating immediately after using the cleaning product.

In no circumstance shall any abrasive cleaner, polish or cleaners containing ketones or ether be used.

FREQUENCY

For all Products located within one (1) mile of the seashore:

- Customer shall clean the Product six (6) times per year.
- The cleaning cycle shall commence within two (2) months of installation.
- Cleaning shall be conducted in intervals not to exceed two (2) months.
- Customer shall maintain fully documented records throughout the Warranty term.

For all Products located more than one (1) mile of the seashore:

- Customer shall clean the Product four (4) times per year.
- The cleaning cycle shall commence within three (3) months of installation.
- Cleaning shall be conducted in intervals not to exceed three (3) months.
- Customer shall maintain fully documented records throughout the Warranty term.

ADDITIONAL FACTORS

Damage from installation, mechanical processes, jig marks and other related defects must be repaired immediately in order for the Warranty to remain in effect.

Protective tapes used in installation must be a "low-tack" quality and must not be left in contact with the surface for more than one (1) month.

Harmony Railing™ must approve all sealants and mastics prior to installation in order for Warranty to remain in effect.



HARMONY
RAILING™

[HarmonyRailing.com](https://www.harmonyrailing.com)

(844) 724-5001



© 2021 Harmony Railing™. All Rights Reserved. Version 3.3

Part # MH39650